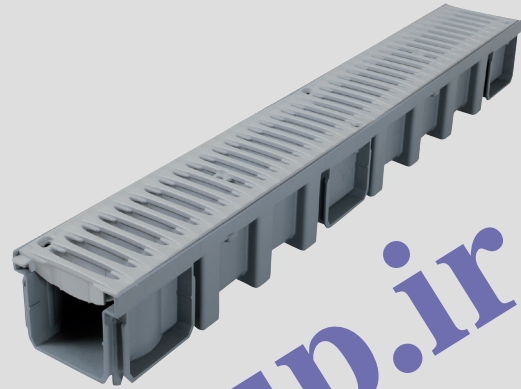


New Connecto[®] B125-class grating

Building

NEW



Nicoll has released an innovative new range of high-performance, practical and attractive PVC gratings. Our new B125-class grating has been redesigned to fit seamlessly into your garage entrance projects.

Advantages:

- Robust: withstands vehicle wheel loads
- Excellent hydraulic capacity
- Resistant to corrosion
- Controlled expansion of the grating
- Lockable (optional)
- Complies with requirements for people with reduced mobility



New Connecto[®] B125-class grating

Building



PVC GRATINGS FOR CAN177, CAB773 AND CABS773

	REF. LIGHT GREY	REF. SAND	PACK.
 Standard-length (0.5 m), B125-class grating	GR77	GR77S	12

USE

The new GR77 grating is used to collect stormwater. It is primarily designed for use in locations where B125-class load resistance is required as a minimum, such as garage entrances, private car parks, pavements, multi-storey car parks and pedestrian areas accessible to light vehicles.

ADVANTAGES

Functional design: the specially shaped bars act as an obstacle to water passing over the grating

Durable: the grating is resistant to chemical agents (chlorine, salt, soap, etc.) and corrosion. The anti-UV treated PVC material retains its colour over time

Modern design: the new grating is available in grey and sand versions, so it fits seamlessly into different projects


Lockable: all you need to lock the grating are two FIXCAN fastening kits (optional)

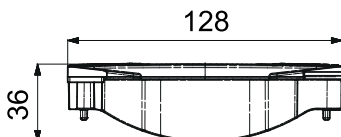
Attractive finish: the cover plates deliver a genuinely attractive finish

Robust: B125 load class

Controlled expansion of the grating: the positioning brackets ensure that the grating is correctly fitted into the drainage channel, leaving sufficient space to allow the gratings to expand

TECHNICAL CHARACTERISTICS

Anti-UV treated PVC grating
 B125 load class (NF EN 1433)
 Complies with requirements for people with reduced mobility 
 Absorption surface area: 471 cm²/ml



? DID YOU KNOW?

Be careful not to use misleading statements such as "light traffic" or "suitable for car loads" without specifying the class. These statements have no regulatory value. You or your customer may be held liable.

Demand a B125-class brand!

