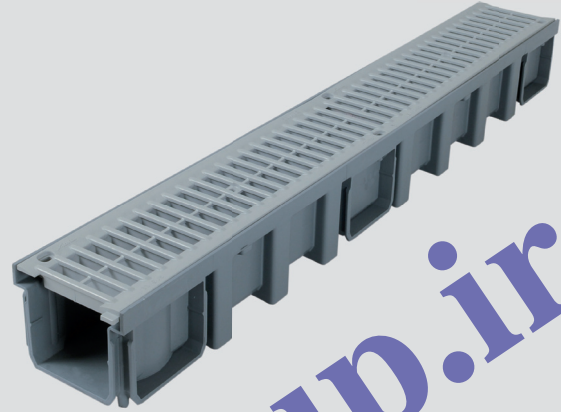


New Connecto® A15-class grating

Building

NEW



Nicoll has released an innovative new range of high-performance, practical and attractive PVC gratings. Our new A15-class grating has been redesigned to fit seamlessly into your surroundings.

Advantages:

- High absorption capacity
- Complies with requirements for people with reduced mobility
- Resistant to corrosion
- Controlled expansion of the grating
- Lockable



New Connecto® A15-class grating

Building



PVC GRATINGS FOR CAN177, CAB773 AND CABS773

	LIGHT GREY VERSION	SAND VERSION	DARK GREY VERSION	PACK.
 <p>0.5 m A15-class grating with high absorption capacity</p>	GRL77	GRL77S	GRL77K*	12

* The GRL77K has a high solar radiation absorption coefficient.

To extend the product's lifetime, Nicoll requires dark grey GRL77K-class gratings to be screwed to the gutter body with the FIXCAN attachment system.

USE

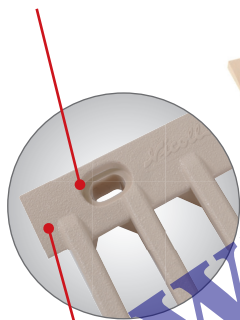
The new GRL77 grating is used to collect stormwater. It is primarily designed for use in locations where A15-class load resistance is required as a minimum (areas for pedestrians and cyclists), such as terraces, garden paths, parks, swimming pools, play areas and so on.

ADVANTAGES

Durable: The grating is resistant to chemical agents (chlorine, salt, soap, etc.) and corrosion. The anti-UV treated PVC material retains its colour over time.

Modern design: The new grating is available in grey, sand and dark grey versions, so it fits seamlessly into different projects.

Lockable: All you need to lock the grating are two FIXCAN fastening kits (optional).



Attractive finish: The cover plates deliver a genuinely attractive finish.



Controlled expansion of the grating: The positioning brackets ensure that the grating is correctly fitted into the drainage channel, leaving sufficient space to allow the gratings to expand.

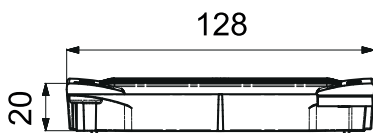
TECHNICAL CHARACTERISTICS

Anti-UV treated PVC grating

A15 load class (NF EN 1433)

Complies with requirements for people with reduced mobility 

Absorption surface area: 490 cm² / ml



DID YOU KNOW?

Be careful not to use misleading statements such as «light traffic» or «suitable for car loads» without specifying the class. These statements have no regulatory value. You or your customer may be held liable.

Demand an A15-class brand!



09385601212 - 09354696712

www.MTgroup.ir



Head office and Plants: 37, rue Pierre et Marie Curie - BP 10966 - 49309 CHOLET Cedex // Tel. 02 41 63 73 83 - FAX 02 41 63 73 57 - www.nicoll.fr
Email: export.nicoll@alixis.com // Technical assistance: tech-com@nicoll.com / SAS au capital de 7 683 431 € - 060 200 128 RCS Angers

an Aliaxis company